

# UTAH GIANT PUMPKIN GROWERS

## *The Pumpkin Vine*

Jan 2008

VOL IV ISSUE I

### BLAIR WIN'S AGAIN, TAKES 1<sup>ST</sup> AT 2007 WEIGH OFF

Suspense gripped the weigh off as two giant pumpkins were clearly larger than all the other that were entered. It was impossible to tell which one was bigger just by looking at them, because the two pumpkins had such different shapes. Andrew Isrealson had a light orange beastly sized pumpkin that was tall and round, while Kenny Blair had a darker orange pumpkin that was flat and long. Earlier the judges taped both pumpkins and Andrew's taped bigger. He was the man most likely to win. But the final outcome, as every grower knows who's ever been to a weigh off knows, is measured by the scale not the tape. Pumpkins can go heavy or light for who knows why. All but these last two pumpkins had been weighed. Ross Bowman was in the lead with a 782 lb. pumpkin. But everyone knew that the two remaining pumpkin were both going to beat that weight. Kenny's pumpkin was brought to the scale, since it is tradition to weigh the biggest pumpkins at the weigh off from smallest to largest according to the tape. After the numbers on the readout jumped around for a second or two the readout stabilized at 988.5 lbs. Kenny had a smile on his face. He was happy with the weight. As Andrew and his pumpkin came up to the scale Kenny reached over and shook his hand and said something like: I hope it weighs what it's supposed to. In other words, I hope you win. But it wasn't to be as the readout showed 948 lbs. It had come in light. Both Andrew and Kenny tried to hide the disappointment on their faces as Andrew congratulated Kenny on his win. We can set our own goals or expectations, but at a weigh off the tape sets the expectations. Maybe next year we shouldn't tape any of the pumpkins? Congratulations to Kenny on another 1<sup>st</sup> place win and to Andrew on a new personal best.



Kenny & Adair Blair with Kenny's 988.5 lb winning pumpkin.



2007 Weigh-off pictures:

Top: Andrew Isrealson & family with his 948 Isrealson 07, 2<sup>nd</sup> place pumpkin, Ross & Kay Bowman with their 782 Bowman 07, 3<sup>rd</sup> place pumpkin.

Middle: Brent Wolfley & family with the 731 Wolfley 07 4<sup>th</sup> place pumpkin, Jenna & Kayla Wolfley and their long gords, Gordon Tanner with his 719 Tanner 07, 5<sup>th</sup> place pumpkin.

Bottom: Randy Tousley & family with their 697.5 Tousley 07, 6<sup>th</sup> place pumpkin ,Mike Kuslan & family with their 643 Kuslan 07, 7<sup>th</sup> place pumpkin, Marion Bushman & family with their 627 Bushman 07, 8<sup>th</sup> place pumpkin.





Kevin Card 620 lbs., Mitch Eiting 579.5 lbs., Neal Westwood 578 lbs.  
 Joe Chapman 566.5 lbs. Mason Ewing 565.5 lbs., Rick Carlson 559 lbs. dmg.  
 Angela Burton 528.5 lbs., Billy Rhodes 514.5 lbs., Brian Griffith 462.5 lbs.  
 Jim West 435.5 lbs., Nicole Ashley 423.5, Russ Haslam 404 lbs.

## 2007 WEIGH OFF RESULTS (All weights in lbs.)

1	Blair, Kenny	988.5	Other	Tanner, Gordon	623.0
2	Israelsen, Andrew	948.0	Official	Israelsen, Andrew	620.0
3	Bowman, Ross	782.0	Weights	Tousley, Randy	494.5
4	Wofley, Brent	731.0		Israelsen, Andrew	493.5
5	Tanner, Gordon	719.0		Bailey family	455.0
6	Tousley, Randy	697.5		Tousley, Randy	438.5
7	Kushlan, Mike	643.0		Chapman, Joe	421.5
8	Bushman, Marion	627.0		Brown family	366.0
9	Card, Kevin	620.0		Brown family	348.0
10	Eiting, Mitch	578.5		Chapman, Joe	310.5
11	Westwood, Neal	578.0		Ewing, Mason	293.0
12	Card, Ben	570.0		Nielson, Terry	291.0
13	Chapman, Joe	566.5		Thatcher, Richard	283.5
14	Ewing, Mason	565.5		Farmer, Travis	280.5
15	Burton, Angela	528.5		Brown family	278.5
16	Rhodes, Billy	514.5		Nielson, Terry	204.0
17	Brown, Duff	495.5		Pryor, Dwayne	188.5
18	Carlson, Rick	494.5	Damaged	Christiansen, Eric	163.5
19	Griffith, Brian	462.5	Pumpkins	Carlson, Rick	559.0
20	West, Jim	435.5		Wolfley, Josh	511.0
21	Ashley, Nicole	423.5			
22	Haslam, Russ	404.0			
23	Christiansen, Eric	400.0			
24	Bradley, David	394.5			
25	Thatcher, Richard	353.5			
26	Nielson, Terry	341.5			
27	Eichers, Ron	333.5			
28	McSwain, Phillip	323.0			
29	Farmer, Travis	317.5			
30	Hunt, Gary & Rachel	302.5			
31	Evans, Brent	289.5			
32	Leavitt, Richard	252.0			
33	Haslam, Steve	245.0			
34	Richardson, Kristin	239.0			
35	Jensen, Jeff	237.5			
36	Pryor, Dwayne	236.0			
37	Ensign, Bryson	231.0			
38	Scott, Sam	222.0			
39	Hughes, Brent	199.5			
40	Nash, Clint	174.0			
41	Chapman, Cailin	164.5			
42	McSwain, Harry	146.5			



Above: Andrew and Kenny shake hands behind Andrew's pumpkins right after it was weighed.





Thanks to all who helped with the weigh off! The 2007 weigh off results along with pictures for most of the pumpkins entered are on our web site. We also have information on our upcoming events along with other giant pumpkin related information. You can find it at <http://www.utahpumpkingrowers.com/>

**Welcome to the Utah Giant Pumpkin Growers, UGPG, 2008 season.** Yes the months keep passing by which means it's time for a new pumpkin growing year. At this time of year we all have hopes of growing the next state record pumpkin.

#### 2008 MEMBERSHIP DUES

UGPG membership is the calendar year from Jan 1<sup>st</sup> to Dec 31<sup>st</sup>. So it's time to renew if you haven't done so already. Membership is \$20. This gets you in on the annual seed give away and into all UGPG activities during the year, including free entry into the weigh off. Your membership needs to be to us by March 10<sup>th</sup> for you to be eligible for our seed distribution this year. If you signed up last fall and did not bring a pumpkin to the weigh off then you are OK for 2008. Thank you to those who have already renewed.

#### SEEDS DISTRIBUTION

The UGPG seed distribution will take place this March. The distribution will include seeds from the area's top growers and some others from around US. You must be a current member to receive the seed. If you haven't renewed for 2008 please do so. In March we will be sending out seed from the top fruit at the weigh off. If you want to share your seeds with the group we are looking for about 80-100 packaged of seeds. We have about 75 members and we'll pass the rest out at the seminars. Send your seeds to Gordon Tanner at 1393 S 750 Kaysville, UT 84037. Remember to include the seed cross. Thanks to all who share their seeds!

#### SEMINARS

Come join with other pumpkin obsessed people, rub shoulders with Utah's best pumpkin growers and learn their methods and techniques. We have two "How to Grow" seminars planned for this spring, one at the Rockin'E Store on and the other at Thanksgiving Point. The Rockin'E seminar will be broken up into two classes. The beginning class will start at 10 am and will go for approximately 2 hours. We will then take a break for lunch. After lunch the advanced class at approximately 12:30 pm. Cost is free.

At Thanksgiving Point we will only have the beginning/intermediate class that will start at 1 pm. The class instructors will stay after to answer any questions. Cost is for this class is \$7 but we hope to have a bag of fertilizer to give away to help offset this cost. See page 9 for maps to the two locations.

#### 3<sup>rd</sup> ANNUAL PATCH TOUR

Our annual patch tour will be Saturday August 9<sup>th</sup> 2008. Yes coming again this summer, join with us and see the patches of your fellow growers from beginner to advanced. If you'd like your patch to be included on the tour let us know. We

plan to visit patches of grower's of all abilities so don't be afraid to contact us and let us know you are interested. It is a good way to get top notch advice for your patch.

#### WEIGH OFF'S

Again we are happy to announce that this years main weigh off will be at Rockin E Country store in Woods Cross on Saturday Oct 11<sup>th</sup>2008. Larry Sagers will be the MC again this year. (I guess we should officially ask him before we print that, but since he has done it every year since we can remember, we just figure he will do it again this year.) The weigh off will run like it has the last two years.

Registration starts at 8 am, judging is from 11 am to noon, and the weigh off will start at noon.

This years J&L Garden Center Weigh off/pumpkin display will be Tuesday October 21 thru Saturday October 25<sup>th</sup>. Drop your pumpkin(s) off before 6 pm. And pick them up by 1 pm on Saturday.

#### THE UGPG BOARD

Feel free to contact us with any questions or concerns.

<u>Name</u>	<u>phone</u>	<u>email address</u>
Gordon Tanner, Pres.	451-5002	s1tanner@yahoo.com
Ray Tolman, VP	295-7019	jetrbt@msn.com
Kevin Card, VP	756-5711	highlandpumpkins@yahoo.com

Information on this year's UGPG events along with other information can be found on our web site: <http://www.utahpumpkingrowers.com/>

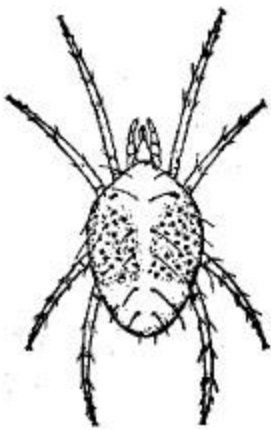
Many Utah growers get diseased plants in the middle of the summer. We are still not sure what is causing the problem. Using certain insecticides such as Sevin to help control squash bugs also kills the natural enemies of the spider mites. So the spider mite population can soar in the weeks after application. Spider mites do better on weakened plants. In the summer our plants typically are weakened by higher temperatures, naturally occurring Fusarium & Pythium in our soils and the annual onset of Powdery Mildew. I believe "the problem" could really be the combination of all the above factors. Merit can be used for squash bugs. Banrot can help for Fusarium & Pythium and Powdery Mildew. Many other products are also listed for Fusarium, Pythium and Powdery Mildew. Steve Reagan Co in Salt Lake City carries Banrot and lots of other "stuff" for your patch. Below is an article I found on spider mites. Carefully choose and carefully use what you decide to apply to your patch. Remember that "more on" is usually not the right thing to do. For addition help in diagnosing your patch problems contact a knowledgeable grower or your local county extension service. Always use the proper personal protect equipment when applying chemicals in the patch. – Gordon Tanner

**Mites:** Spider mites are capable of infesting many garden, tree, shrub and bedding plants found around the home. The figure below shows a two-spotted

spider mite. Mites are not insects, but arachnids, related to ticks and spiders. Melons, squash and other cucurbits, and many other plants are susceptible.

**Damage:** Mites damage plants by sucking cell contents from leaf tissue. The initial damage appears as a stippling (or peppering) of light dots on the leaves. As feeding continues, the leaves turn yellow or bronze in color and drop off. Heavily infested leaves and branches can be enclosed in fine silken webbing.

Because spider mites are very small, they can be difficult to see on plants. You can determine the presence of mites by holding a piece of white paper underneath a leaf and shake or tap the leaf sharply. If mites are present, some will be dislodged from the leaves and fall onto the paper, where they will be seen as tiny moving specks.



**Biology:** Spider mites are small (ca. 1/20 to 1/60 inch long), eight-legged arthropods that may be brown, red, green or cream-colored. They live in colonies, mostly on the lower surface of leaves. Adult females deposit small, red to cream-colored eggs on a leaf, bark, or in webbing. Spider mites reproduce rapidly in hot, dry weather. With favorable temperatures and adequate food, a generation can be completed in seven to 10 days. Mites can catch wind currents and disperse to other plants when the foliage quality declines on heavily infested plants. Mites can overwinter in several stages of development, such as adult females under rough bark scales or ground litter, or as eggs

deposited near dormant buds.

### **Mite control measures**

**Biological control:** Some of the natural enemies that feed on spider mites are small, black ladybird (ladybug) beetles, lacewing larvae, some thrips species, minute pirate bugs, and predatory mites. These enemies often occur naturally, but sometimes they do not prevent mite populations from reaching damaging levels. Because mite predators are extremely susceptible to many insecticides (especially conventional pesticides), do not apply pesticides until the health or appearance of the plant is threatened by the mites. If pesticide treatments are warranted, confine the applications to only those plants most seriously infested; this will help conserve the natural enemies. Some natural enemies, such as predatory mites and ladybugs, may be purchased from commercial operations for release around the garden and yard.

**Cultural control:** Spider mites flourish on plants under stress. Keep plants well watered and fertilized, because damage is increased when the plant does not receive sufficient water. Mite outbreaks can be triggered by dusty conditions. Because these conditions adversely affect mite predators, water at regular

intervals, when necessary, any dirt areas that might be next to infested plants. Mite populations can also be reduced by forcefully spraying plants with water, especially on the underside of leaves, to break up the webs and wash the mites off. You can apply this technique as often as necessary.

**Chemical control:** When natural enemies are not abundant enough to provide effective spider mite control, conventional miticide applications are sometimes needed to prevent further plant injury. The table below provides a list of miticides (both conventional and alternative) that should be effective in controlling mites on home garden plants, trees and shrubs. Because mites can reproduce rapidly, they may develop a tolerance to a conventional miticide used repeatedly. Consequently, it is recommended that you alternate the use of conventional miticides with other types of pesticides, such as soaps and oils. The chemicals listed should be available to the homeowner.

Site	"Friendly" <sup>1</sup>	Insecticide	Examples of brand names
<b>Mites</b>			
Garden plants		dicofol	Bonide® Kelthane Hi-Yield® Kelthane
	X	insecticidal soap	Concern® Insect Killing Soap Safer® Insecticidal Soap
		malathion	Ortho® Malathion Insect Spray Ace® Malathion
	X	pyrethrins	Schultz® Houseplants and Gardens Insect Spray
	X	rotenone	Bonide® Rotenone Insect Control Hi-Yield® Rotenone
	X	sulfur	Bonide® Liquid Sulfur Hi-Yield® Wettable Sulfur

<sup>1</sup>Check-marked products are generally considered environmentally friendly (but not necessarily less toxic or more effective than conventional insecticides).

**Warning on the use of chemicals:** Before using any chemical, please read the label carefully for directions on application procedures, appropriate rate, first aid, and storage and disposal. Make sure that the chemical is properly registered for use on the intended plant and pest.

**Phytotoxicity:** Certain chemicals may cause plant injury if used at the wrong stage of plant development or when temperatures are too high. Injury may also result from excessive amounts or the wrong formulation or from mixing incompatible materials. Please read label carefully for phytotoxicity warnings.



# UTAH GIANT PUMPKIN GROWERS 2007 HOW TO GROW SEMINARS

Saturday, March 22  
Beginner Class: 10:00 am  
Advanced Q & A session: 12:30 pm  
Rockin E Country Store  
1201 West 500 South  
Woods Cross, UT 84087  
Cost: Free  
[www.rockinecountrystores.com](http://www.rockinecountrystores.com)

Saturday, March 29  
Beginner Class: 1:00 pm.  
Thanksgiving Point  
3003 North Thanksgiving Point  
Lehi, UT 84043  
Cost: \$7  
call 1-888-672-6040 or sign up online  
[www.thanksgivingpoint.com](http://www.thanksgivingpoint.com)

Map to Rockin E Country Store Seminar is in the back room.



Map to Thanksgiving Point Seminar Class room building; the room is downstairs.





#### 2008 MEMBERSHIP DUES

Reminder- UGPG membership is from Jan 1<sup>st</sup> to Dec 31<sup>st</sup>. So it's time to renew for 2008 if you haven't done so already. Membership is \$20. Your membership needs to be renewed by March 10<sup>th</sup> for you to be eligible for our seed distribution package this year.

#### **UTAH GIANT PUMPKIN GROWERS**

**1393 S 750 E**

**KAYSVILLE, UT 84037**